









Base



Base

Gewebe	DIN 60 001		100% PES
Flächengewicht (g /m²)	DIN EN 12127		140
Gewebedicke (mm)	DIN ISO 2286-3		0.38
Lamellenbreiten (mm)			89, 127
Schwerentflammbarkeit			B1 (DIN 4102), M1 (NF P 92501-7)
Lichtechtheit	DIN EN ISO 105-802		5-6
Feuchtraumgeeignet			Ja
Pflegehinweise			

Solar und Optische Kennzahlen (DIN EN 410) Alle Werte sind Nennwerte mit einer Toleranz von +/- 5%

Farbe	50	51	53	59
T_v	47	34	30	51
R_v	49	33	28	48
A_v	4	33	42	1
T_s	47	42	41	50
R_s	49	41	39	49
A_s	4	17	20	1
UV	32	24	24	41
g_{tot}	0.46	0.50	0.51	0.47

T_v

Lichttransmissionsgrad (%)

R_v

Lichtreflexionsgrad (%)

A_v

Lichtabsorptionsgrad (%)

UV

UV-Transmissionsgrad (%)

T_s

Strahlungstransmissionsgrad (%)

R_s

Strahlungsreflexionsgrad (%)

A_s

Strahlungsabsorptionsgrad (%)

g_{tot}

Gesamt g-Wert (Glas g-Wert: 0,72; 1,6 W/m² K) DIN EN 13363-1



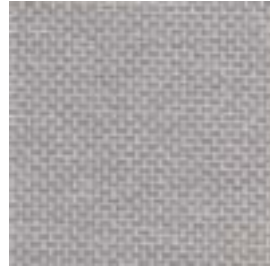
59



50



51



53