









Triscreen 3%, 5%, 10%



Triscreen 3%, 5%, 10%

Gewebe	DIN 60 001		Glasfaser, PVC ummantelt (35% Glasfaser, , 65% PVC)
Flächengewicht (g/m ²)	DIN EN 12127		450 (3%), 430 (5%), 390 (10%)
Gewebedicke (mm)	DIN ISO 2286-3		0.60
Stoffbreite (cm)			250
Öko-tex Standard 100	LYC 05-2714 ASQUAL		Ja
Schwerentflammbarkeit			M1 (NF P 92501-7)
Lichtehtheit	DIN ISO 105-B02		7-8
Feuchtraumgeeignet			Ja
Pflegehinweise			

Öffnungsfaktoren 3/5/10%: Diese Koeffizienten geben den Anteil der Öffnungen im Gewebe an.

Solar und Optische Kennzahlen (DIN EN 410) Alle Werte sind Nennwerte mit einer Toleranz von +/- 5%.

Farbe	Triscreen 3%							Triscreen 5%							Triscreen 10%						
	008	009	064	065	076	077	094	008	009	064	065	076	077	094	008	009	064	065	076	077	094
T_v	9.02	20.41	18.77	7.72	5.42	4.35	11.61	13.18	22.78	22.93	10.14	6.94	7.44	12.59	19.86	28.30	26.08	12.05	11.48	13.27	18.86
R_v	66.82	77.19	70.87	54.69	48.71	54.65	63.25	63.53	74.72	66.63	54.62	50.31	52.91	65.24	61.95	69.67	64.26	58.77	53.20	54.84	63.55
A_v	24.16	2.40	10.36	37.59	45.87	41.00	25.14	23.29	2.50	10.44	35.24	42.75	39.65	22.17	18.19	2.03	9.66	29.18	35.32	31.89	17.59
T_s	11.01	20.77	20.34	8.39	5.51	4.98	14.02	14.97	22.88	24.06	10.80	7.07	8.49	15.12	21.60	28.87	27.43	12.56	11.85	13.90	21.28
R_s	58.62	67.02	62.30	47.31	41.34	47.25	55.50	55.51	64.52	58.42	47.10	42.68	46.13	57.66	54.29	60.38	55.96	50.54	45.66	47.46	56.38
A_s	30.37	12.21	17.36	44.30	53.15	47.77	30.48	29.52	12.60	17.52	42.10	50.25	45.38	27.22	24.11	10.75	16.61	36.90	42.49	38.64	22.34
UV	2.49	2.16	2.43	3.28	3.38	2.21	3.00	4.00	4.47	5.46	5.25	4.02	4.30	4.03	8.83	8.85	7.88	5.92	6.22	7.46	6.09
g_{tot}	0.40	0.37	0.39	0.45	0.47	0.45	0.41	0.41	0.38	0.41	0.45	0.47	0.45	0.41	0.42	0.40	0.42	0.44	0.46	0.45	0.41
F_c	0.55	0.51	0.54	0.62	0.66	0.62	0.58	0.58	0.53	0.57	0.63	0.65	0.63	0.56	0.59	0.56	0.58	0.61	0.64	0.63	0.58

T_v Lichttransmissionsgrad (%)

R_v Lichtreflexionsgrad (%)

A_v Lichtabsorptionsgrad (%)

UV UV-Transmissionsgrad (%)

F_c Abminderungsfaktor (pf EN 14501 2005)

T_s Strahlungstransmissionsgrad (%)

R_s Strahlungsreflexionsgrad (%)

A_s Strahlungsabsorptionsgrad (%)

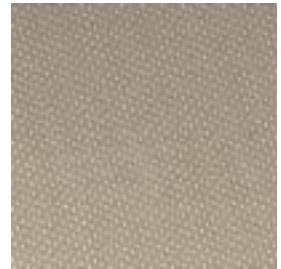
g_{tot} Gesamt g-Wert (Glas g-Wert: 0,72; 1,6 W/m² K) DIN EN 13363-1



009



064



008



094



065



077



076